

HK-HB250-(P)(A)-GK

5.0 MP ColorVu fixed lens Network Camera

ColorVu

Key Features

※ 1/2.8"IMX307 Black light illumination CMOS sensor;1920*1080@25fps

Color 0.0001Lux@F1.2,black/white 0.0001Lux@F1.2

※ H.265AI/H.265+(Compatible with H.265/H.264)Support dual stream

AVI;0.1M~8Mpbs variable;1~30f/s variable

※ Alarm I/O: 1/0 (support alarm input and video link to background)

※ Supporting human detection and tripping line detection, and supports intelligent functions such as customized face detection, number statistics, etc

※ Support 2D/3D noise reduction,digital wide dynamic



※ 2pcs White Light LED,24/7 colorful imaging Up to 25M

※ 2.8/4/6/8mm fixed lens

※ DC 12V power supply (customizable Poe power supply)

※ Customizable audio and two-way Voice (Built-in Power Amplifier Board and Speaker)

※ IP67

※ Support ONVIF;access third party, Support various mobile monitoring(iPhone,Android)

※ Provide web、CMS、center platform management software MYEYE,provide SDK development

※ Support cloud technology,easy to achieve network penetration,fro in-line and alarm information pushed

Reasons for choosing

9 upgrade features to meet monitoring needs



Starlit night vision

The best
night vision



Star level cameras don't require infrared or fill lamps, and can display clear color surveillance at night with a light source. Below is a comparison of infrared night vision and starlight night vision.



Infrared night

Starry night

Camera aging box

Each camera requires a rigorous aging time of more than 24 hours



Suitable for various environment, Wall Mounting & Lifting



Warehouse



Restaurants

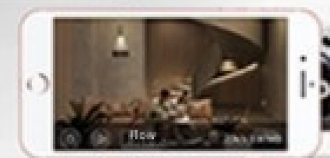
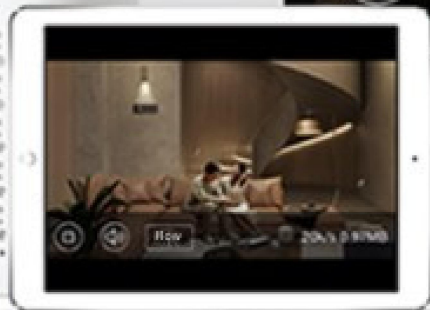


Garages

Cell phone remote

Multi-terminal support for MOBILE/TABLET/PC

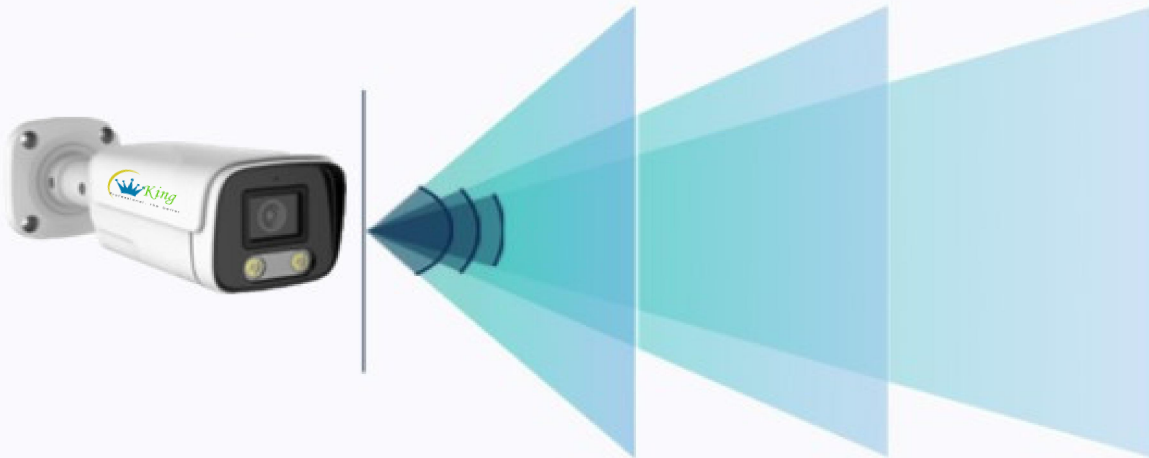
Monitor your home from time to time



Multi-focal length optional

Dual seal handling supports waterproof and dustproof

Easy to handle rain and snow weather indoors and outdoors



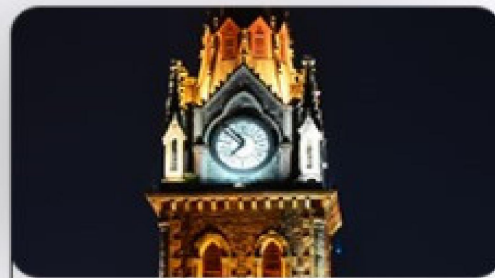
Lens size	2.8mm	4mm	6mm
Surveillance Angle	114.6°	89.1°	54.4°
Identification Distance	4M	7M	13M



Focal length : 2.8MM Angle of view : 114.6°



Focal length : 4MM Angle of view : 86.2°



Focal length : 6MM Angle of view : 54.4°

More features (support for customization)



Built in Microphone



Two Way Audio



POE

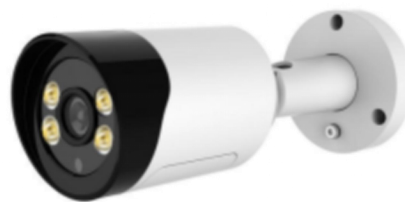


WLAN



SD

More products (optional)



Specification

Model		HK-HB250-(P)(A)-GK
Camera	Image Sensor	1/2.8" IMX335 Black light illumination CMOS sensor
	Min. Illumination	Color: 0.001Lux/F1.2, B/W: 0.0001Lux/F1.2; 0Lux/F1.2(IR on)
	Effective Pixels	2592(H)x1944(V)
	Scanning System	Progressive
	Shutter	1/50(1/60)s to 1/10,000s
	Noise reduction	Support 2D/3D
	Wide dynamic	Support digital
Camera Features	Max. IR LEDs Length	20-25m (2pcs White Lights LED)
	Day/Night	Auto(ICR)/Color/B/W
	Backlight Compensation	BLC / HLC / DWDR
	White Balance	Auto
	Gain Control	Auto/Manual
	Alarm triggered	Motion Detection, occlusion alarm, anomaly
	SMART event	Perimeter breach detected
	Intelligence analysis	Supporting human detection, face detection
Lens	Focal Length	2.8-12mm Varifocal lens
	Max Aperture	F2.0
	Focus Control	Varifocal lens
Video	Video compression	H.265 +(Compatible with H.265/H.264) support dual stream,AVI;0.1M~8Mbps variable;1~30f/s variable
	Resolution	5MP(2592*1944), 4MP(2560*1440), 3MP(2304*1296),2MP(1920*1080); D1(800*448)/CIF(352*288)
	Main Stream	5MP/2MP(1 ~ 25fps)
	Sub Stream	D1/CIF(1 ~ 25fps)
	Bit Rate	H.265 < H.264: 32K ~ 8192Kbps, MJPEG: 32K ~ 20480Kbps
Network	Network interface	1*RJ45 10/100M adaptive Ethernet port; support RTSP/FTP/DHCP/NTP/UPnP etc
	Protocol	IPv4/IPv6, HTTP, HTTPS, SSL, TCP/IP, UDP, UPnP, ICMP, IGMP, SNMP, RTSP, RTP, SMTP, NTP, DHCP, DNS, PPPoE, DDNS, FTP, IP Filter, QoS, Bonjour
	ONVIF	Support
	Max. User Access	10 users
	Smart Phone	iPhone, iPad, Android, Windows Phone
	Client port	VMS/CMS; XMeye
Auxiliary Interface	Memory Slot	N/A
	Alarm	N/A
	Audio	Optional
General	Power Supply	DC 12V power supply (customizable Poe power supply)
	Power Consumption	<8W
	Working Environment	-30°C~+60°C, 10%~90%
	Ingress Protection	IP67
	Dimensions	194*102*98mm
	Weight	0.5Kg

Dimensions

